



# NESPRESSO®

---

P R O F E S S I O N A L

English



## User manual **ES 80**



Before using this appliance please read carefully the user manual and the safety instructions!



# IMPORTANT SAFEGUARDS

When using electrical appliances, basic safety precautions should always be followed, including the following:

- Read all instructions carefully.
- Do not touch hot surfaces. Use handles or knobs.
- To protect against fire, electric shock and personal injury do not immerse cord, plugs or appliance in water or other liquid.
- Close supervision is necessary when any appliance is used by or near children.
- Unplug from outlet when not in use and before cleaning. Allow to cool before putting on or taking off parts, and before cleaning the appliance.
- Do not operate any appliance with a damaged cord or plug or after the appliance malfunctions, or has been damaged in any manner. Return appliance to the nearest authorized service facility for examination repair or adjustment.
- The use of accessory attachments not recommended by the appliance manufacturer may result in fire, electric shock or personal injury.
- Do not use outdoors.
- Do not let cord hang over edge of table or counter, or touch hot surfaces.
- Do not place on or near a hot gas or electric burner, or in heated oven.
- Always attach plug to appliance first, then plug cord into the wall outlet. To disconnect, turn any control to off, then remove plug from wall outlet.
- Do not use appliance for other than intended use.
- Use extreme caution when disposing hot steam.
- Do not put fingers inside capsule housing, due to the sharp needle that is there to pierce the capsule.

## SPECIAL CORD SET INSTRUCTIONS

Regarding your Cord Set:

- A A short power-supply cord (or detachable power-supply cord) is provided to reduce risks that may result from longer tangled cords.
- B Longer detachable power-supply cords or extension cords are available and may be used if care is exercised in their use.
- C If a long detachable power-supply cord or extension cord is used (1) the marked electrical rating of the detachable power-supply cord or extension cord should be at least as great as the electrical rating of the appliance, (2) if the appliance is of the grounded type 3-wire cord, and (3) the longer cord should be arranged so that it will not drape over the counter top or table top where it can be pulled on by children or tripped over.



## CAUTION

Household and commercial use only. Any servicing other than cleaning and user maintenance should be performed by an authorized service representative.

- Do not immerse base in water or try to disassemble.
- To reduce the risk of fire or electric shock, do not remove the base, or any user serviceable parts inside. Repair should be done by authorized service personnel only.
- Check voltage to be sure that the voltage indicated on the name plate corresponds with your voltage.
- Never use warm or hot water to fill the water container. Use cold water only!
- Keep your hands and the cord away from hot parts of the appliance during operation.
- Never clean with scouring powders or sharp implements.
- The cord or any defective element must be replaced exclusively by your Nespresso dealer. Under no circumstances should you open the machine yourself.

## SAFETY INSTRUCTIONS

Read these instructions carefully before using your Nespresso machine.

- Do not plug the machine into anything other than a grounded electrical socket. Verify that the voltage indicated on the technical specifications plate on the bottom of the unit corresponds to your electrical installation.
- Do not place your Nespresso machine on a hot surface (electrical heating plate for example) or near a flame.
- Attention: Do not draw off hot water while temperatur indicator lamp (red) blinks fast. Strong steam jet would result instead of hot water - hazard of burning! Cool down the system see Cappuccino «4».
- Do not open the jaw while the machine is functioning since the extraction of coffee is done under high pressure.
- Do not use the machine without the drip tray and grill in place.
- Remove the plug when cleaning your machine.
- Ensure that the electrical cord does not come into contact with sharp or hot objects. Do not disconnect the electrical plug by pulling on the cord.
- Avoid touching the electrical cord as well as any other part which may become hot during the use of the machine (steam nozzle, chrome portion of capsule holder).
- Never plunge the machine in water.
- Keep the machine and the electrical cord out of children's reach.
- For descaling, adhere to the directions which follow:
  - 2 Preparation: please read carefully the safety instructions on the descaling packaging.
  - 3 Descaling: do not open the jaw and do not use the steam nozzle during descaling process.
  - 4 Rinse: rinse the water tank and clean the machine to avoid any residual descaling agent.
- Do not use the machine if it is damaged or if the cord is in bad condition.
- The cord or any other defective element must be replaced exclusively by an authorized after-sales service center. Under no circumstances should you open the machine yourself.

## Save these Instructions

# Descaling



## Descaling warning:

All green lamps are flashing



## 1 Nozzle



Remove nozzle/ cappuccinatore device and adapter



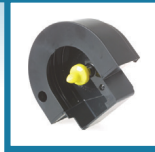
Dismantle the cappuccino device

## 2 Preparation

Machine off



Eject capsule



Empty drip tray, remove Claris filter



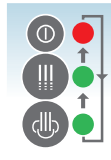
0.1l descaling agent + 0.5 l water



Recipient (min. 0.6 l)

Place cloth in case of steam injection

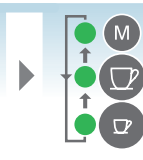
## 3 Descaling → START:



Lamps



Lever right



Lamps



Lever left

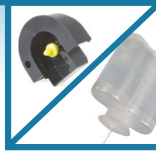


Refill the tank

## 4 Rinse



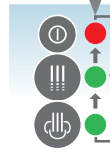
Lamps



Empty the tanks, rinse and fill water tank completely



START:

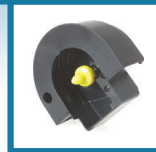
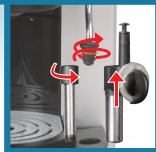


Lamps



Lever right

## 5 Finish



Machine switches off automatically



# Volume



Factory setting:



40 ml



110 ml

## Change setting

**1**  Press button M

Coffee

Hot water

**2** Within 10 seconds



Press + hold



Lever to the right

**3** Fill cup  **OK**  
min. 15 ml



Release button




Lever to the left

**4** Within 10 seconds: Press button M




New volume has been stored

## Troubleshooting

 No indication




Check plug and fuses

 Coffee is not hot enough




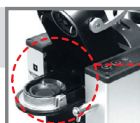
Prewarm cup, hot water without capsule.  
Descalcify if necessary

 Coffee does not come out




Clean, descale if necessary

 No coffee, water only



Clean/insert capsule correctly

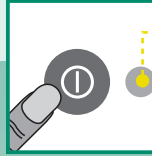
 Coffee is not flowing, green status display lights up



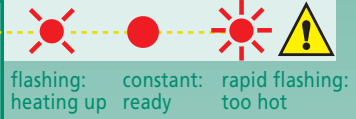
Fill water tank

# Preparation

- 1** Switch on  
Jaw closed



Temperature indicator:



flashing:  
heating up

constant:  
ready

rapid flashing:  
too hot

- 2** Fill water tank  
fresh water

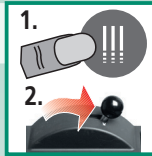


## Before the first usage / after a longer period of non-use:

- 3** Rinse  
Coffee outlet + hot  
water/steam nozzle



Place a recipient  
on cup tray



Let water flow for  
1 minute, press  
button repeatedly



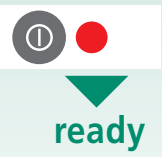
Let water flow for  
1 minute, press  
button repeatedly

## Daily:

- 4** Pre-heating/rinsing



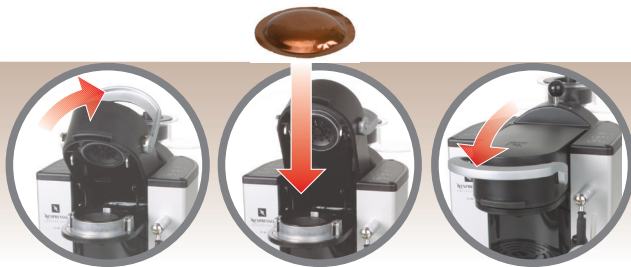
2 cups without capsule



# Espresso

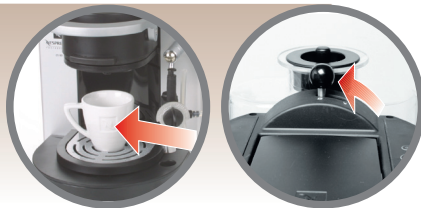
1

Insert capsule



2

Place a cup on drip grid



3

Select small or large cup



**STOP** automatic or

4

Eject capsule



*The capsule drops into capsule container*



*Keep system warm*

Daily after last espresso



*Capsule container*

*Some left over water is normal*



**NESPRESSO**<sup>®</sup>

---

P R O F E S S I O N A L



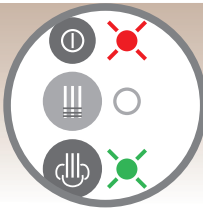
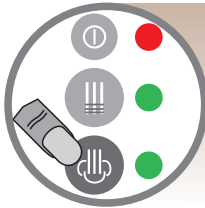
## Froth milk for

# Cappuccino

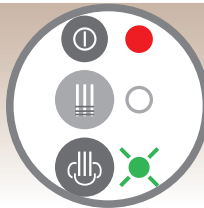


Preparing the milk

1



heating up



ready

Select «steam»

2



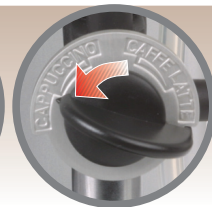
Froth OK



3



Beware of hot nozzle



Temperature change ~55-75°C

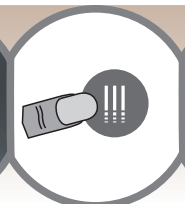
4



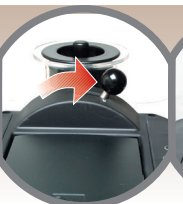
too hot



Place a recipient



Let water flow for 30 seconds



ready



Cool down system

5

see

**Espresso**

Prepare espresso direct into the frothed up milk


6

# Cappuccino – Caffè latte: clean after each use

Warm up phase



Deep into fresh water

 Beware of hot nozzle



Rinse minimum 10 sec.



Dismantle and clean cappuccinatore once a week

